

## If You Would Like to Make a Christmas Present

That would be much appreciated, select  
from the following:

- Oldest Imported Port Wine, full quart . . . \$3.00
- Oldest Imported Rich Sherry Wine, full quart] . . . \$3.00
- Oldest Imported Rich Maderia Wine, full quart . . . \$3.00
- Bottle of Whiskey, guaranteed 17 years old and full quart . . . \$3.00
- Full quart of Imported Brandy, guaranteed 1893 and guaranteed straight . . . \$3.00
- Full quart of Imported Scotch Whiskey, guaranteed straight . . . \$2.00
- Full quart of Imported Irish Whiskey, guaranteed straight . . . \$2.00
- Full quart of Imported Jamaica Rum, guaranteed straight . . . \$1.50
- Full quart of Imported Holland Gin, guaranteed straight . . . \$1.50
- Full quart of New Life Rye Whiskey, guaranteed straight . . . \$1.50

## EDWARD APPEL

18 State Street

Both Phones

Free Delivery

## The Great Atlantic and Pacific Tea Co.

Headquarters Rochester  
210 Main Street East

Branch Stores

74 Main Street West

294 North Street

286 West Ave. Cor. Reynolds St.

Both Phones 1510

300 Stores in the U. S.

Headquarters for Xmas Greens and Decorations

### H. E. WILSON, Florist

Designs and Decorations a Specialty

STORES { 88 Main Street East  
379 Main Street East  
453 Hudson Avenue

Both Phones

Greenhouses, Avenue D and Hudson Avenue

### Lewis Edelman,

Dealer in

ANTHRACITE  
Telephone 570  
88 Portland Avenue  
Near Z.Y.C. & H.R.R.

COAL

BITUMINOUS  
Roch. Phone 2480  
848 Exchange Street

Prompt attention paid to Phone and Personal Orders

### A. L. Lehnkering

Makes the finest PHOTOGRAPHS at the most reasonable rates

24 State Street

Over White Kitchen

### JOHN M. REDDINGTON, Lehigh Valley COAL

Brightest, Cleanest, Best

99 West Main Street

Telephone 361

### E. BERTELSEN

Grinding and Locksmithing, Keys Fitted, Electrical Work,  
General Repairing

Get your husband, son or brother a safety razor for Christmas  
Home Phone 5091 22 Front Street

### JOHN F. MOLONEY 155 BROWN STREET Dry Goods and Notions

Men's and Boy's Underwear from 50c to \$2 a Suit.  
Hosiery 10c to 25c cotton, wool and cashmere.  
Ladies and Childrens underwear, 30c to \$2 a Suit.

Baby bonnets, boys' sweaters, mufflers, tams, gloves, mitts, shawls  
Bell Phone 1748-L Main

### German American Lumber Co.

GET OUR PRICES

134 Portland Ave.

888 Clinton Ave. S

Both Phones; Home 1006, Bell 1246

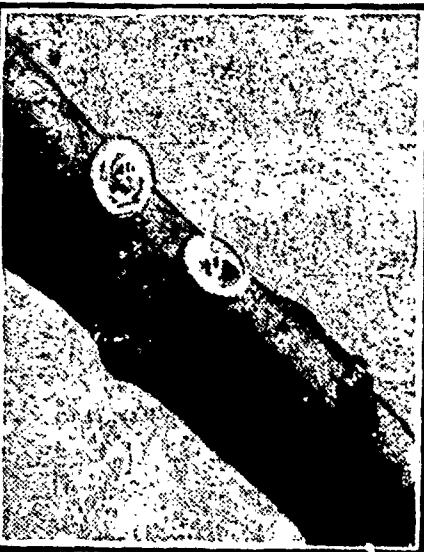


## The Mistletoe

By ROBERTUS LOVE.

[Copyright, 1907, by Robertus Love.]

WHEN you step under the sprig of mistletoe hanging from the chandelier to get your Christmas kiss you may not be particularly interested in the genesis of the peculiar little vegetable growth which 'upud seems to have appropriated for his own. Nevertheless the process of mistletoe production and reproduction is highly interesting. In some parts of England, where most of the mistletoe of Christmas



BERRIES CRUSHED ON A BRANCH.

time comes from the gardeners propagate the parasite artificially. Mistletoe, as is well known, is of the parasitic kind, taking its sustenance not from the ground, but from a tree. The apple tree seems to be its favorite, though the hawthorn, the lime and the poplar frequently carry the parasite. The scientific inoculation of trees with the mistletoe growth is practiced with excellent results in the north of England. The gardener takes between his thumb and forefinger one of the little berries of the mistletoe, crushes it so that its sticky juice oozes out and sticks it upon the surface of a branch of the tree. Usually he selects a young branch, on which the bark is soft and easily penetrable. If an older branch be chosen, the bark is slightly scraped on the surface. The berry is mashed flat against the bark. The seed which it contains is thus held in place by its own gum.

Late April or May is the proper season for inoculating. The seed soon sends through the bark a little "feeler" or root, and a small twig, bending in toward the branch of the tree, appears.



SWELLED BRANCH AND TWIG.

After a considerable period this twig, which looks like a small fishhook sticking in the tree from the top of the hook, falls off. The uninitiated thinks it is all over, but the experienced gardener knows better. He knows that after a time the branch will begin to swell at the point of inoculation, gradually rising to a little

peak at the place where the hook has been. This tip gets green and shiny, a bud pushes up, and in a few weeks an unmistakable twig of mistletoe is visible, with a stem and a long leaf or two.

After this the mistletoe comes rapidly into its kingdom and takes possession. The close observer will see other little swellings and peaks along the branch, the thin roots of the mistletoe having traveled under the bark to sprout up in fresh places. Thus it travels along until sometimes the whole tree is in its possession, fine bunches of the Christmas hanger growing abundantly.

When once the mistletoe takes possession of a fruit tree the effect upon the fruit is quite noticeable. The mistletoe takes its nourishment from the tree to which it clings. That is the soil in which its roots live and thrive. Naturally this reduces the amount of substance which formerly went into the fruit. If the captive be an apple tree, the apples become small and scraggly. The mistletoe has stolen away their sweetness and plumpness. Man grows by what he feeds on. So does mistletoe. And as the poor eating man visits the penalty of death upon the pig so does the penalty of withering and scouring fall upon the apple whose progenitor feeds the spreading parasite. Nature is full of wonders, and the growth of mistletoe is one of the most wonderful when adequately studied.

Mistletoe grows naturally in parts of England and Scotland, being propagated by birds. In some of the northern counties of Scotland no mistletoe is found. This is believed to be due to the absence of the mistle thrush



TWIG AND FIRST BUD BURSTING.

from those counties. The thrush of this name is exceedingly fond of the mistletoe berry. After eating its fill the bird flies to another tree. Being cleanly, it uses the branch of the tree upon which it alights for a napkin, wiping its sticky bill thereon. Frequently a mistletoe seed is thus deposited and glued to the bark. Then the reproductive process follows naturally.

An official inquiry as to whether mistletoe is still to be found on oak trees, as in Druidical days, resulted in the discovery of several oaks in one county of England bearing the parasite. But modern mistletoe has come to be Cupidical rather than Drauidical. When the mistletoe and the miss, miss the mister, get in the proper positions the result rhymes with kiss.

Willy's Hot Christmas.

"Well, Willy," said Uncle Ned, who sometimes talked slangy, "I suppose you had a hot time on Christmas."  
"I sh'd say I did," replied Willy. "Santa Claus filled my socks so full that they fell down into th' fireplace an' ketched on fire, an' I got up t' gether up the scraps that was left an' found paw there tryin' t' do th' same thing, an' I got m' hands an' arms burned so I had t' stay in bed all day, an' then paw licked me fer gettin' up so early on Christmas mornin'."

## A World of Good Things for Christmas

### Marzipan

Just received, our annual large importation of genuine Marzipan from Lubeck, assorted in fruits, biscuits, roast beef, steak, sausage, herring, goose, with all kinds of vegetables, made from pure ground almonds and sugar, colored with pure fruit colorings. This is a great confection in the old world and eaten by the old people as well as the young people. We carry the largest assortment of these goods west of New York.

### Lebkuchen

Direct from the largest manufacturers in Europe, Heinrich, Haeberein, Nuernberg, all kinds of Nuernberger and Basler Lebkuchen, Honig Kuchen, Spitzkuehn, Dampfnuesse, Pfeffernuesse, Hutzelbrod, Springerle, Marzipan, Kuchen, large fancy boxes assorted. Kuchen with almonds, assorted wafers, ice wafers, matinee wafers, and numerous other fine specialties.

### Wines, Etc.

Sparkling Mosel, Sparkling and Still Burgundy, Oelde Perdriz. Fancy baskets wine containing six pints assorted champagne, red and white; very appropriate for Christmas gifts. Rare old Claret, Burgundy, Rhine Wines, Mosel, Sauternes, Champagnes, Old Whiskeys, Brandies, Cordials, John Lobatt's Famous London Ale, and about every other appropriate beverage for table and sideboard.

### Delicacies

Imported Westphalian Ham, Imported Cervelat, Pommeranian Goosebreast, Bismark Herring, New Anchovies, Appetit Sild, Frankfurter Sausage, California Asparagus, Mushrooms, Pickled Walnuts, French Peas, Stuffed Prunes, all kinds of Fancy Olives and many other fine specialties too numerous to mention.

### Cheese

French Camembert, Edelweiss, Swiss cheese, LaBric, Lelsigny, McLaren's and Royal in jars, Cream, Neufchatel, Wiener, Edam from Rotterdam. Full cream, Vezet Holland, Welsh Rarebit, Parmesan, Sap Sago, Societe, Roquefort, Limburger.

### Nuts

Grenobles, Papershell, Almonds, Pecans, Naples, Filiberts, Brazils, Jordan Almonds (shelled), etc. We handle only the choicest Nuts. We import them especially for this market once a year for the holiday trade, hence they are always absolutely fresh.

### Cigars

The same high excellence that characterizes our other goods is noticeable in our various brands of Imported Key West and Domestic Cigars.

In short, for all such rare delicacies for sideboard and table as can be found nowhere else in western New York call at the

## B. FEIOCK STORE,

135 Main St. E., Near St. Paul St.

Home 387

Bell Phone 2087

## Christmas Tree Holders



Are you going to have a Christmas Tree this year? If you are, then you need some way of fastening it so that it will hold firmly in place. The Crown Tree Holder has for twenty five years proven itself a very practical holder.

It is strongly made, easily adjusted, saves time, stands firm and prevents accidents. If you have ever tried to make a tree stand in a box filled with wood or coal you will appreciate the advantage of having a good tree holder. The "Crown" holds any tree that is placed in it, firmly. Simply turn the ring to the bottom which loosens the clamps; the ring is then turned upwards until the clamps become tight against the tree. As the tree dries out the ring should be pushed upward. The holder can be made fast to the floor by nails or screws. It can easily be taken apart and stored away for future years. Two sizes—\$4.45 and \$6.65.

Louis Ernst & Sons, 129 Main St. E.

## Goods for this Season

Horse Blankets,

Carriage and Auto Robes,

Heaters for Carriages and Autos

The Best Line You Have Ever Seen.

## CHAS. S. GIBBS

Harness Store

93 State St.

### John H. McAnarney

(Successor to O'Grady & McAnarney.)

Fire, Plate Glass, Boiler and Elevator Insurance  
Fidelity Bonds for Administrators, Contractors, Executors, Etc.,  
Plumbers and all kinds of Court and Security Bonds  
Offices—101 and 109 Ellwanger & Barry Bldg. Entrance 39 State St.