

# THE BELL TELEPHONE



You need a telephone in your house, your office, and your factory. Send a card to the Bell Telephone Company, North Fitzhugh Street, and an agent will call on you.

# THE BELL TELEPHONE

## The YATES COAL COMPANY

Wholesale and Retail Dealers and Shippers of

**Anthracite COAL Bituminous**

General Office Elwood Building.

Telephone 311.

YARDS:

53 Hill St.

King St. cor. N. Y. C. & H. R. R.

### Interesting to Ladies.

Just received a special line of vestings for evening and business wear, will make handsome Christmas presents.

P. Ralph Plass,  
Triangle Building.

### Real Estate Company.

C. F. Garfield, 9 Exchange St., Garfield Bldg. Everything in Rochester Real Estate. Houses for sale from \$650 to \$100,000. Rents collected. Our 9 rental department employees and unequalled facilities for quickly renting and economically managing Rochester property are at your service at very reasonable rates. See our rental bulletin. Homes on Garfield's easy payment plan.

### For Fine Meats and Groceries

go to Henry R. East, 37, 39, 41 and 43 Front St. and 2 to 10 Cornthian St.

### Curtis Bros. Co.

known as the Rochester Preserving House are preservers and packers of canned fruits, vegetables and meats, jams, jellies and preserves also manufacturers of the famous "Blue Label" tomato ketchup and soup.

### Picture Frames, Etc.

We make a specialty for the retail trade of high class framing and artistic mirrors. J. W. Gillis Co., 195 Exchange St.



If You Feel "Fagged Out,"  
Have HEADACHE,  
BACKACHE,  
POOR APPETITE,  
BAD BREATH,  
BAD COMPLEXION,  
and would like to feel and look well, let us recommend CELERY KING to you.  
Sold by Druggists. Price, 25c. and 50c.

### How to Sleep Well.

The greatest luxury in the whole world is a forgetful peaceful sleep. Yet how few of us are granted this boon. Many people suffer all night from the troubled sleep of indigestion which the eating of a biscuit and a glass of water before retiring would have prevented. It is not advisable to eat heavy or rich food before going to bed but if you feel at all hungry Nature's way will cause you disturb and if you do not make an attempt to satisfy that hunger before going to sleep.

The best position in sleeping is to lie on the right side. Do not throw the arms over the head, and do not curve the legs. There is a great temptation to do this when one is tired and should be resisted. Do not use a bolster, only a moderately high pillow and do not sleep on the sofa as they are debilitating. There is no reason why a night's rest should be interrupted by covering the face with newspaper. If worn down quilts can be afforded they are ideal covering being warm and light. All heavy blankets should be strenuously avoided, and therefore the weight of the wearing a fur coat or other heavy garment over the bed for extra warmth is a very bad one. Windows should be slightly open day and night. Flowers should never remain in a sleeping room and the less heavy drapery the better about the latter. If the bed requires an airing it should be kept scrupulously clean.

### Fancies at Recent Weddings

The four brides who bore the bride-train at an elaborate wedding the other day wore white cloth suits with knee brooches, flowered silk waist coats and lace jabots. The bride gifts to them were diamond initial pins. The four bridesmaids were little girls all in white Empire dresses, white silk pompadour coats, lace trimmed with feathers and pale pink tuckings. The bridegroom's presents to them were platinum necklaces with diamond pendants.

The bridesmaids at another wedding recently wore Empire frocks of white silk muslin with quantity draped flims and long Empire coats of pale blue cloth, with revers and capes of white satin slashed with blue. Their hats were of the pale color or in pale blue. They carried bouquets of pink carnations.

Another group of bridesmaids were attired in ivory fitted muslin dresses some trimmed with lace and others with ribbons. Their hats were of brown beaver and cherry, garnished with shield-shaped ornaments.

The six bridesmaids at an out of town wedding were a variety between the ages of 13 and 16. Their costumes consisted of turquoise blue coats and skirts with ivory crepe de chine waists, collars edged with beaver fur and ivory beaver felt picture hats. They carried bouquets of pink carnations and cream roses.

### Furnaces

### Ranges

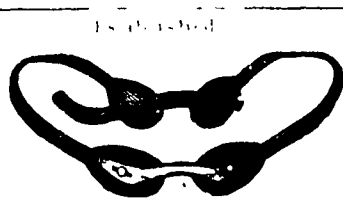
### Bake Ovens

### Refrigerators

### C. W. Trotter & Sons

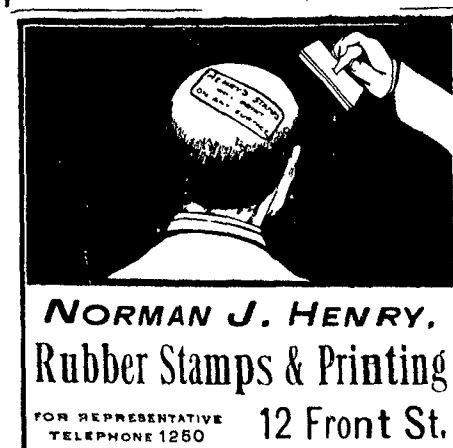
NO. 7 EAST AVENUE.

Rochester, N. Y.



TRUSSES MADE TO ORDER  
For difficult cases. All standard patterns always on hand. Satisfaction guaranteed or money refunded. We do not promise a cure, but guarantee to get well from properly fitting Trusses.

No charge for examination.  
ABDOMINAL SUPPORTERS  
ELASTIC STOCKINGS,  
LEG BRACES, ETC. ETC.  
GEORGE R. FULLER CO.  
100 South Ave., Rochester, N. Y.  
BRANCHES:  
Chicago, Ill.  
Buffalo, N. Y.  
Boston, Mass.  
Philadelphia, Pa.



NORMAN J. HENRY,  
Rubber Stamps & Printing  
FOR REPRESENTATIVE  
TELEPHONE 1250  
12 Front St.

# Establishing A Home.

Choosing a profession or life work is a very important event in the career of a young man, no less is the establishing and furnishing a home. Many a young man is homeless because of a wrong idea that he is unable to have a home of his own, and with no purpose in life spends his income in channels that bring no substantial returns.

There are stores that prey upon young people; take advantage of their inexperience by alluring advertising then by deceptive dealing, making it a difficult matter to establish a home. One of the reliable house-furnishing establishments of this city is Whipple's at the corner of West Main and North Washington Streets.

At this store-furnishings for the modest home to the pretentious mansion can be found and when it is known what is desired; their long experience is exercised to afford just what is most desired.

Accommodation is also extended as is consistent with good business management and methods. This establishment has inaugurated a profit sharing plan with its customers in the form of their Gold Bond Trading Stamps which are given for all cash paid in their office whether for cash trade or for accounts paid according to agreed terms.

These stamps are also given by hundreds of merchants throughout the city for cash trade; one stamp for each ten cents represented in a purchase, ten stamps for every dollar, etc.

The Gold Bond Stamp system is an excellent method of co-operative advertising for the merchants who give them, many thousand people are saving the stamps and they naturally trade where they can obtain them. Only 500 stamps required to fill a book which is then worth \$1.50 in cash or \$2.00 in trade at Whipple's House Furnishing Establishment, the home of the Stamp.

This company also has a plan whereby societies or organizations can easily make one or two hundred dollars cash. Inquire of the secretary, if interested, for particulars.

## M D Rye Whiskey

A Natural Pure Whiskey

25c Half Pint

**EDWARD APPEL**

18 STATE ST.

### STATEMENT OF THE

## ALLIANCE BANK

At the close of business December 8th, 1904.

Resources	Liabilities
Loans and Discounts \$4,373,470.40 Capital \$275,000.00	Banking house and lot 100,000.00
Stocks and Bonds 1,580,449.71 Profits 220,378.46	Cash on hand \$90,232.00 Deposits 6,800,579.02
In Banks 852,100.17	
1,251,341.20	
\$7,310,958.38	\$7,310,958.38

### Interest Paid on Special Deposits Comparative Statement of Deposits:

December 8, 1893... \$227,349.37	December 8, 1899... \$1,377,092.45
December 8, 1894... 504,810.07	December 8, 1900... 2,979,595.25
December 8, 1895... 707,503.50	December 8, 1901... 3,801,800.01
December 8, 1896... 733,137.02	December 8, 1902... 5,047,084.45
December 8, 1897... 629,089.79	December 8, 1903... 5,187,210.42
December 8, 1898... 1,052,042.43	December 8, 1904... 6,800,579.02

### OFFICERS:

Hobart F. Atkinson, President James G. Cutler, Vice President.  
Albert O. Fenn, Vice-Pres. & Cashier John P. Palmer, 1st Asst. Cashier  
Charles E. Barton, Asst. Cashier.

### DIRECTORS:

Hobart F. Atkinson, Fernando E. Rogers  
James G. Cutler, Henry A. Strong  
Hiram W. Sibley, Abram J. Katz  
George Eastman, James S. Watson  
Albert O. Fenn, Thomas W. Finucane  
Charles E. Angle, Walter S. Hubbell  
John C. Woodbury.