

A VISIT TO OUR STORE WILL CHANGE CHRISTMAS PRESENTS INTO CHRISTMAS DELIGHTS.

WITH SEASONABLE COMPLIMENTS

Christmas Buying Made Easy

AT THE HOME FURNISHING HOUSE

GIFTS THAT ADD COMFORT AND BEAUTY TO THE HOME. USEFUL, SENSIBLE, ACCEPTABLE PRESENTS. Mammoth Christmas Stocks in every department make gift choosing easy and satisfactory.



Santa Claus in Our Grocery Department

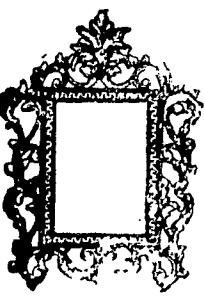
French china and other wares. BRIC A BRAC. Various large quantities. In French china and other wares. BRIC A BRAC. Various large quantities. In French china and other wares. BRIC A BRAC. Various large quantities.



Take Plates, Cup Trays, Silver Trays, etc.

DINNER SETS TEA SETS TOILET SETS

Cracker Jars, Sugar and Cream, etc.



WHAT WE DO IN OUR FRAMING DEPARTMENT

Make Frames of all kinds to order. 128 styles of moulding to select from.

PICTURES FRAMED WHILE YOU WAIT

Make Mats for all kinds of Pictures and Photo Graphs. Regild and Make over Old Frames.

Our Prices on Framed Pictures range from 15c to \$10.00

A Suggestive List from

Furniture
Carpet
Drapery
Basement

Departments

- Fancy Rockers
- Morris Chairs
- Office Chairs
- India Seats
- Dining Chairs
- Extension Tables
- Sideboards
- China Closets
- Hall Trees
- Hall Racks
- Parlor Suits
- Parlor Pieces
- Parlor Tables
- Parlor Cabinets
- Ladies' Desks
- Youths' Desks
- Office Desks
- Library Tables
- Comb nation Laces
- Couches
- Jardinere Stands
- Music Cabinets
- Carpets, Rugs
- Baby Robes
- Carpet Sweepers
- Chamber Suits
- Dressers
- Brass Beds
- Iron Beds
- Chiffoniers
- Wardrobes
- Dressing Tables
- Shaving Stands
- Foot Rests
- Massocks
- Pictures
- Essels
- Picture Frames
- Lace Curtains
- Portiers
- Kitchen Furnishings
- Pantry Furnishings
- Laundry Furnishings
- Men's Chests of Tools
- Alarm Clocks
- Fancy Clocks

COMFORT AND BEAUTY FOR THE HOME.

AS SHOWN BY THE PICTURES

Make Early Selections

Hundreds of the most choice pieces cannot be duplicated from the factories this season. Early buyers will have the largest and most choice assortment to choose from.

LARGEST FURNITURE HOUSE NEW YORK AND CHICAGO

H.B. GRAVES

HOMES FURNISHED COMPLETE PANTRY - PARLOR

HIGH QUALITY

GREAT VARIETY

78 STATE ST. ROCHESTER, N.Y.

LOW PRICES

PRICES IN PLAIN FIGURES

NEW YORK CENTRAL & HUDSON RIVER R.R.

THE FOUR-TRACK TRUNK LINE

Trains leave from and arrive at Centre Avenue Station, Rochester, as follows:

EAST LINE

A. M.—7:00, 8:18, 9:44, 10:55, 11:55

P. M.—12:20, 2:24, 3:35, 4:45, 5:55, 7:05, 8:15, 9:25, 10:35, 11:45

WEST-SHORE RAILROAD

IN EFFECT JUNE 15, 1902.

All trains and depart from N. Y. C. & H. R. R. Station for Syracuse, Utica, Albany, Boston, New York, Buffalo, Niagara Falls, Cleveland, Detroit, Chicago, St. Louis and all points east, west, north and south, as follows:

LEAVE GOING EAST

6:05 A. M.—Continental Limited.

8:40 A. M.—Local Express

10:57 A. M.—New York Express

1:17 P. M.—Newark Local

9:18 P. M.—Atlantic Express

Buffalo, Rochester & Pittsburgh

Trains leave West Ave. Sta. on as follows:

7:30 A. M. Week day. Pittsburgh Day Express. Connects for Silver Lake, Perry, Hornellsville, Jamestown, Cambridge Springs, Cincinnatti, Chicago and points West and South West.

4:00 P. M. Week days, Salamanca and Buffalo Express. Connects for Silver Lake, Perry, Canisteo, Hornellsville, and Jamestown.

11:00 P. M. Daily Pittsburgh Night Express with Pullman Sleeper for Pittsburgh, 8:30 A. M.—Sundays only. Pittsburgh Day Express. Connects for Silver Lake, Perry, Jamestown, Cincinnatti, Chicago and points West and South West.

PATENTS

50 YEARS' EXPERIENCE

TRADE MARKS DESIGNS COPYRIGHTS &c.

Anyone sending a sketch and description may quickly ascertain our opinion free whether an invention is probably patentable. Communication strictly confidential. Handbook on Patents sent free. Oldest agency for securing patents. Patents taken through Munn & Co. receive special notice, without charge, in the

Scientific American.

A handsome 500 page Prayer Book, bound in Morocco leather, gilt edges, round corners, large type, with all approved devotion and prayers for church and home. Also Epistles and Gospels home. Also Bibles, Books, Pearl Rosaries, Photos of Pope Leo XIII and Cardinal Gibbons, Crosses, Statues, etc. Sent postal.

MIRROR SUPPLY CO., Baltimore, Md.

MISS ELIZABETH MCCARTHY

FRANCHISE OF VOICE CULTURE AND PIANO STUDIO 678 Powers Bldg

G.W. BEELER, 42 Reynolds Arcade

Cash and Credit House.

Ladies and Gents Tailor made clothing. Silk Waists and Skirts. Pure Belt and Beaver Hats. Silverware, Jewels, Pearl Buttons and homehold specialties. Pictures framed to order. Catholic pictures a specialty. Open Monday and Saturday evenings.

McGlynn's Raven Paint

Is The Best

For Boiler Fronts, Steam Pipes, Smoke Stacks, Fire Escapes, etc. Dries with a varnish finish. Address: John P. McGlynn, 110 Jones St. Samples free to test.

FURNITURE MOVERS

Furniture Moved, Packed and Stored by Sam Gottry Carling Co. Orders Taken At Erie Office, 12 Exchange St. Telephone 643 or 1412.

New Fish Market

216 Clinton Ave, North. Fish, Oysters and Clams Always on hand. MARSH W. WALZER.

OUR FASHION LETTER.

Useful and Pretty Gowns For Street and Home Wear.

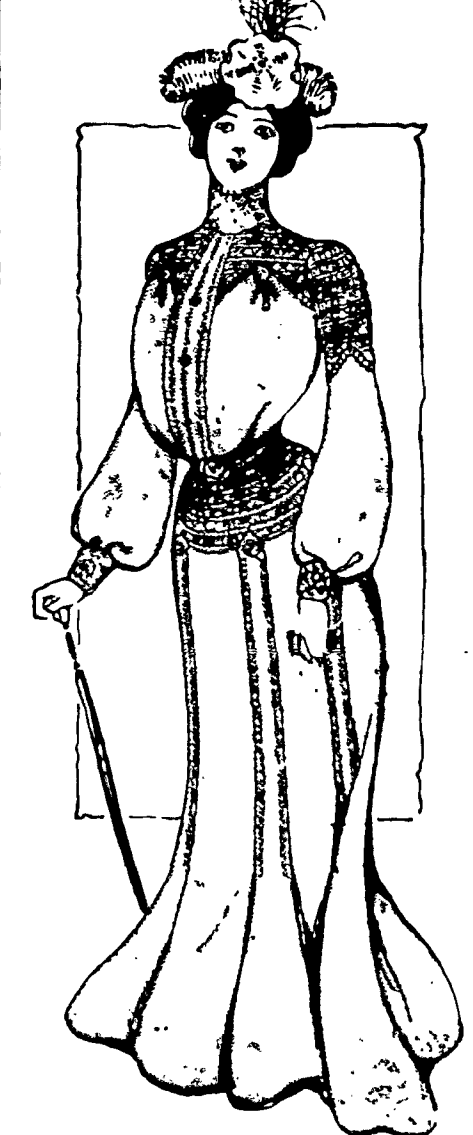
THE NEW MILLINERY FASHIONS

The Big, All White Hat Seems to Be the Reigning Favorite—For Trimmed Hats Much in Vogue Also—Embroideries Popular.

Unless a woman can afford a large variety in her wardrobe it is better for her to remain faithful to dark things, for one easily tires of a color if it is seen constantly.

Chaparrin tint, which has been so popular in Parisian millinery, will appear in evening stuffs mixed with white. Several shades of this color mixed with dead white can be very effective.

Black and dark blue are after all the most serviceable colors for street wear. What is more charming than the tailor



A SERVICEABLE DRESS. Frock of the moment in dark blue serge or zibeline cloth with some hand worked embroidery perhaps on a green ground. Black serge can be treated in the same way, the wearer of such a gown always feels well dressed.

If you can only afford one good gown put all your money in a tailor-made and be sure that it fits nicely and is of serviceable material. It is always better if you can afford to pay a good price to have it made to order, but if you cannot go to a first class tailor buy it ready made. Cheap tailors and dressmakers are a snare and a delusion.

The useful gown here shown is of zibeline and is trimmed simply with tussels and with tucks of the material.

The New Hats. The all white hat continues to rank first in the popular favor. Mink squirrel and sable are the principal furs used to trim hats. The fur hats this year are made in as attractive styles as those of other material and have the wide rolling brims so becoming to youthful faces.

The small turban seems to be relegated to a few mannish milliners; also the three cornered hat has seen its day. The regulation tailor made hat is the French author with its upturned brim and jaunty bow drooping over the hair in the back.

Felt hats made of satin or velvet leaves will be worn all through the winter.

Ostrich plumes are placed under the brim of the most stylish hats which have this kind of trimming. An all



A DRESSY HAT. Black shape is particularly effective trimmed with a single white ostrich plume drooping over the hair in the back.

The dressy hat shown is made of cherries and their foliage, and it is trimmed with touches of deep red chiffon.

Elaborate Dress Trimmings. Black pearls and renaissance scroll figure in all the many beautiful embroideries which seem to be an essen-

tial part of the dress of today, and many gowns have perpendicular bands of ribbon or embroidery carried all the way down the skirt.

The blouses are particularly handsome this winter. They, most of them, have full sleeves set into a very deep gauntlet cuff, but a few of them have horizontal puffings from the wrist to the shoulder, and many are made of materials which appear to have ribbon stripes going downward, while other materials display chine effects. Rows of insertion are deftly introduced, sometimes in a series of vandykes across the front. Pretty and warm blouses for present wear are made of



WHITE FELT HAT. zennana cloth in pink and white, and other mixtures and blue ladies' cloth make up charmingly with white cloth applications.

It is curious to see what ingenuity is brought to bear in the trimmings of dress, the braid being even fringed at the ends to form garnitures.

Blue and green combined will be very smart all through the winter. Watered silk is a favorite mode for brides, but almost hidden by lace.

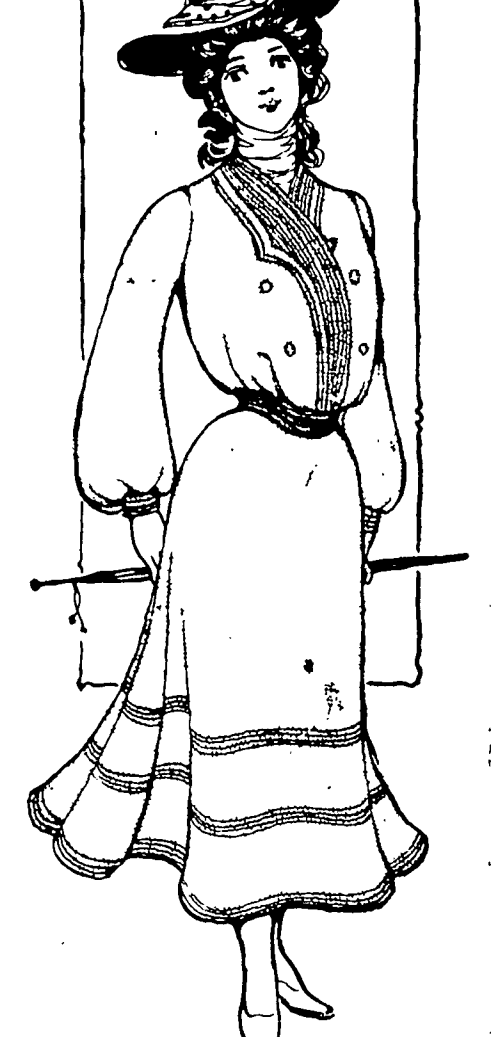
The hat shown is of tucked white felt threaded through with black velvet ribbons.

The Fad For Green. Embroideries play a great part in the dressmaking and tailoring world, and they offer great scope for ingenuity.

Grapes in white and in black applique are all the rage.

There is a fad at present for green, and this is very becoming to fair women. A beautiful princess gown seen recently was of green zibeline cloth fastened down the side with taffeta and chiffon bows in different shades of green. This was worn with a big chiffonilla toque trimmed with a green bird of paradise and tabs of green velvet resting on the hair. There were, furthermore, a wide chiffonilla stole and a chiffon muff lined with green velvet. Both chiffonilla and sable are handsome mixed with emerald green.

Plaids are very popular in Paris and are worn with particular charm by the



DRESS FOR A SCHOOLGIRL. Frenchwomen. They are not very bright, but mostly of nondescript mixtures, dull reds and greens. Plaid traveling toques are now to be seen in soft crushed shapes. They are very effective when worn with a smart tailor made.

The dress for a schoolgirl shown in the cut is of camel's hair cheviot trimmed with braid and gilt buttons. The hat is of velvet.

JUDIC CHOLLET.

A Good Investment. Five acres of land about Charing Cross, London, are held by the Marquis of Salisbury. These acres were obtained by his ancestors 250 years ago for grazing land at the modest rate of \$2.50 an acre for 500 years. What that little bargain has been worth to the Cecils it would be rather difficult to accurately compute.

No Great Improvement. Agent—This reaper and binder will do the work of five hired men.

Farmer Jones—Huh! I kin do more'n that myself, b'gosh!—Pittsburg Dispatch.